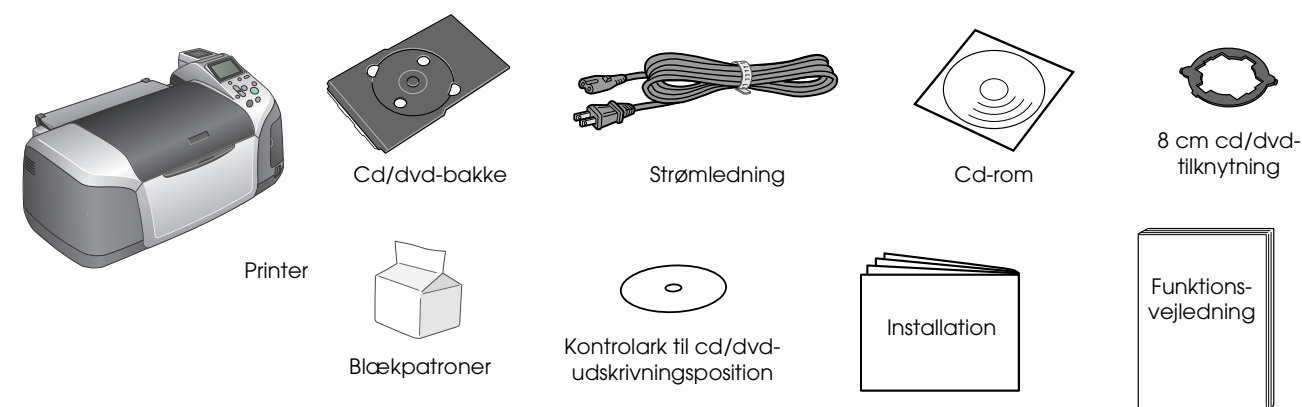
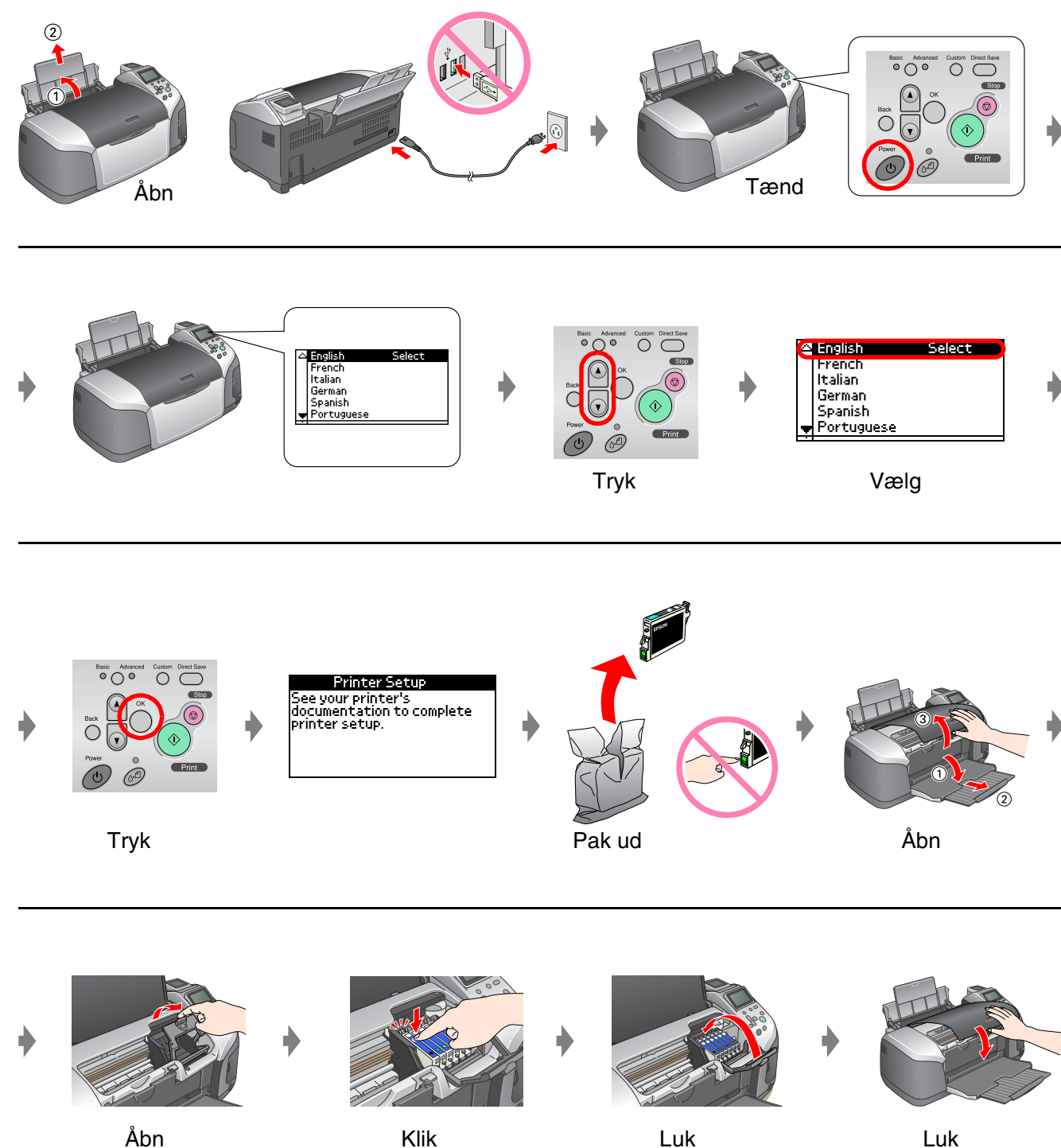


EPSON STYLUS™ PHOTO R320 Series Installation

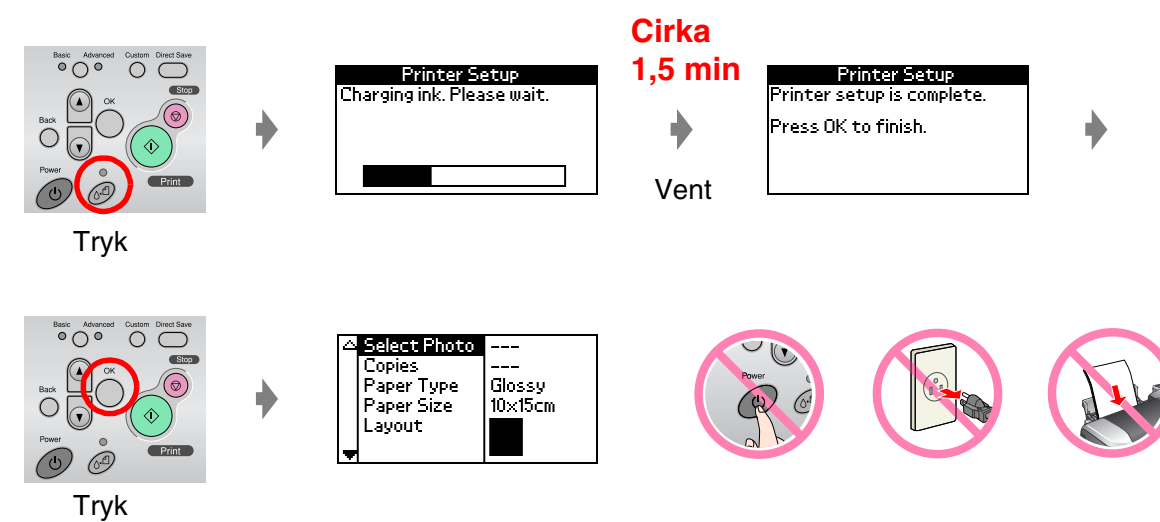
1. Udpakning



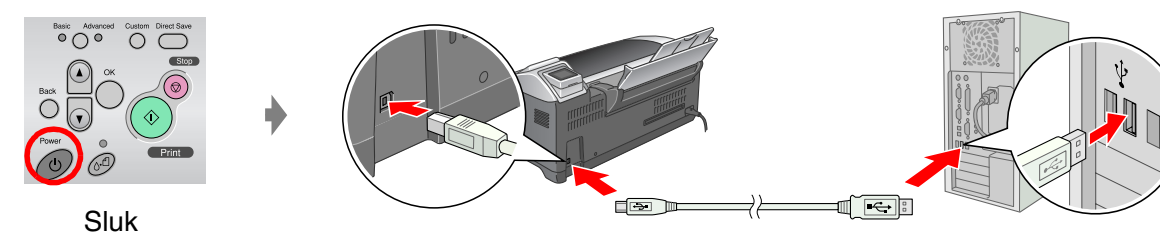
2. Installation af blækpatroner



3. Blækpåfyldning

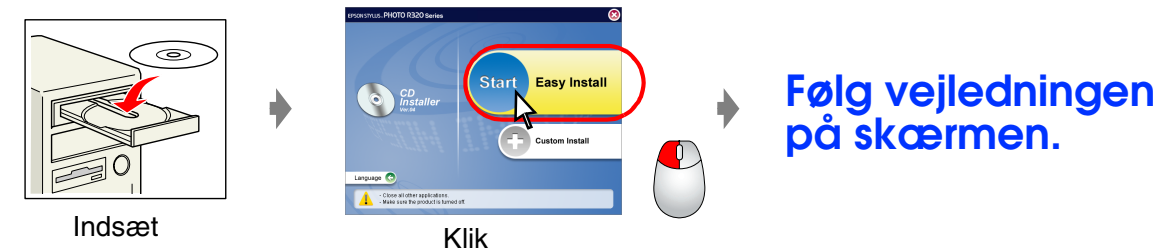


4. Tilslutning til en computer



5. Installation af softwaren

For Windows



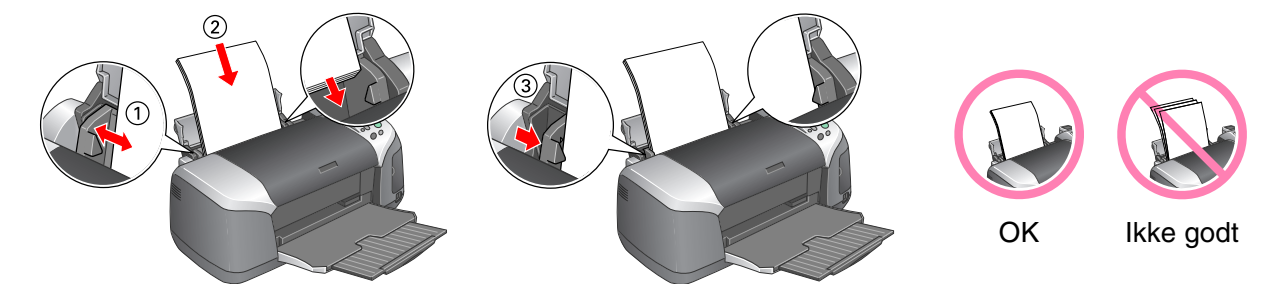
□ Hvis installationsdialogboksen ikke vises, skal du dobbeltklikke på cd-rom-ikonet.

For Macintosh

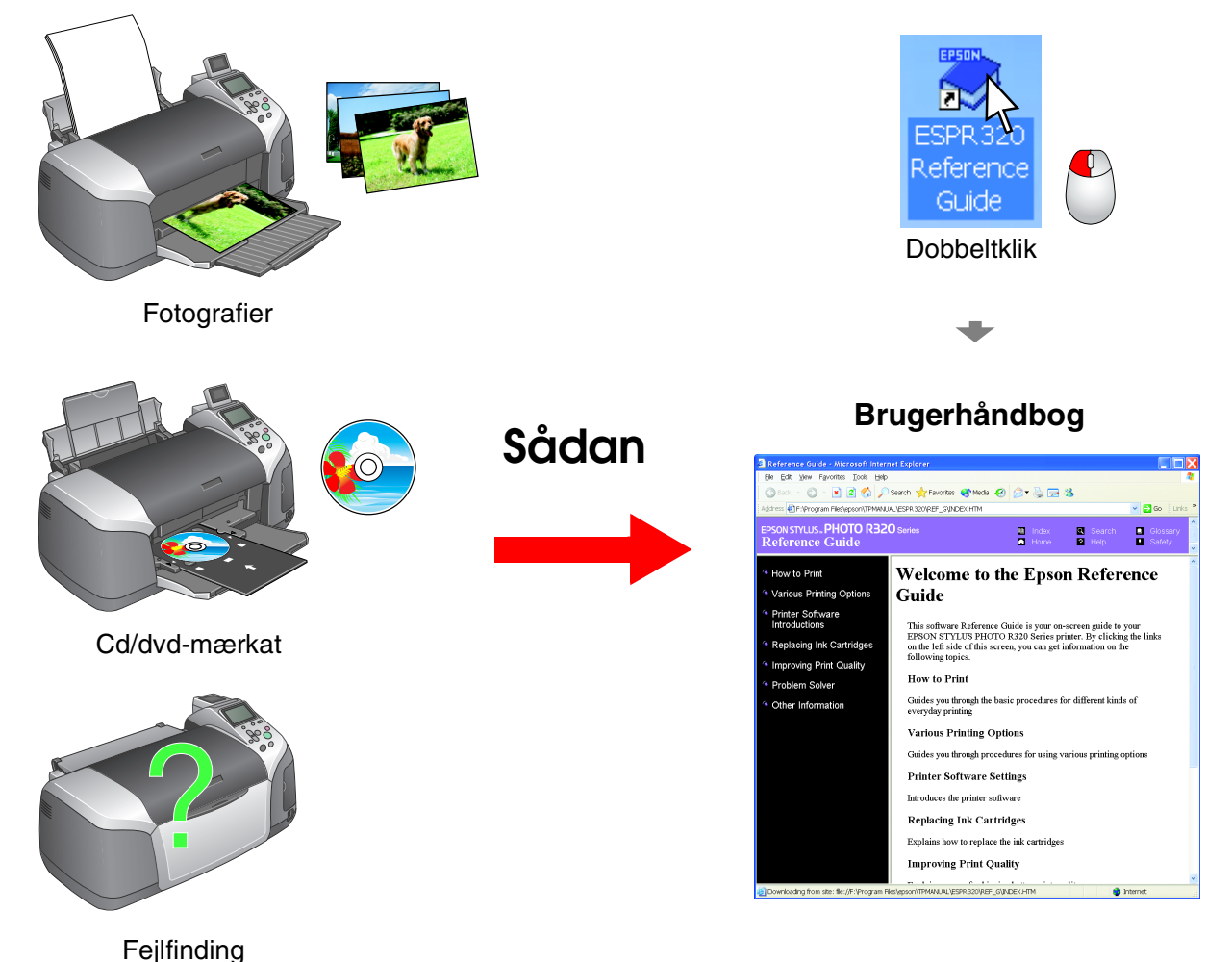


□ For Mac OS 9-brugere: Gå til følgende websted, og overfør driveren.
<http://www.epson.com>

6. Ilægning af papir



7. Få flere oplysninger



410184800